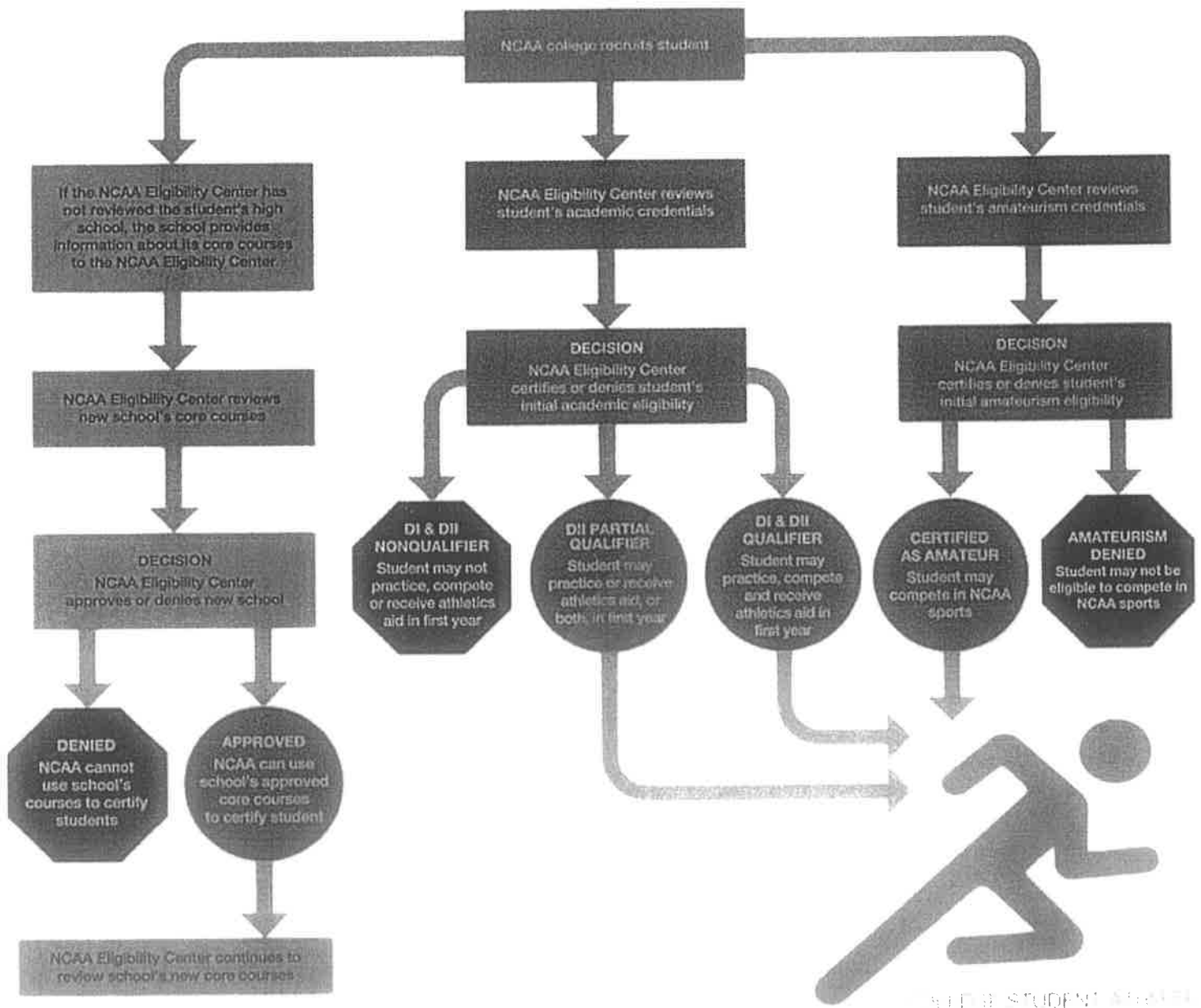
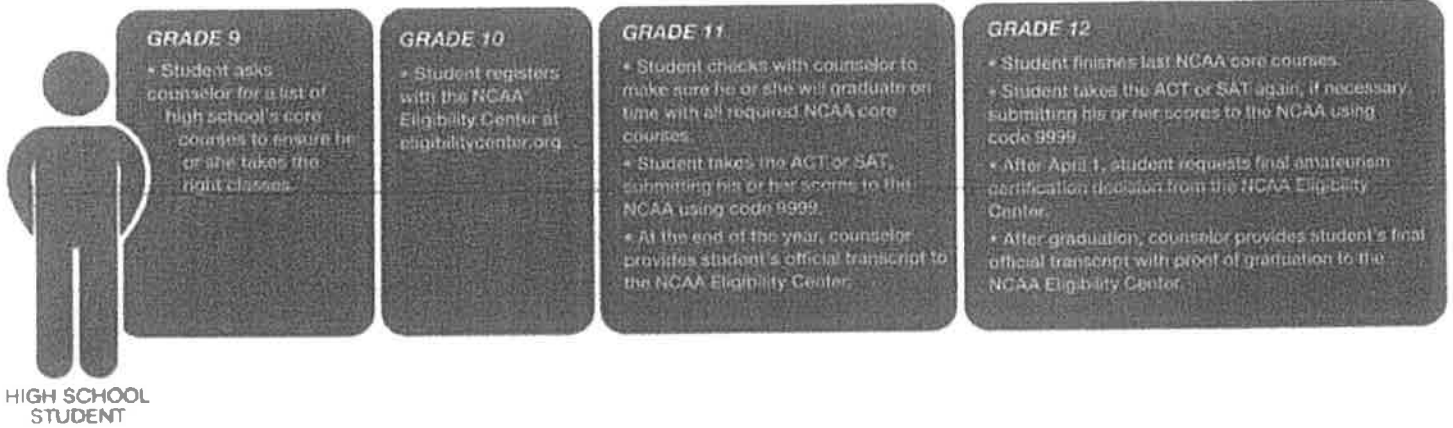


NCAA INITIAL-ELIGIBILITY PROCESS



NCAA RECRUITING FACTS



College sports create a pathway to opportunity for student-athletes.

19,000
Teams

1 Association

DIVISION I

Division I schools, on average, enroll the most students, manage the largest athletics budgets, offer a wide array of academic programs and provide the most athletics scholarships.

PARTICIPATION

- 176,000 student-athletes
- 346 colleges and universities

ATHLETICS SCHOLARSHIPS

56 percent of all student-athletes receive some level of athletics aid

ACADEMICS

2014 Graduation Success Rate: 83 percent*

OTHER STATS

Median Undergraduate Enrollment: 9,205
Average Number of Teams per School: 19
Average Percentage of Student Body Participating in Sports: 4 percent
Division I National Championships: 26 (1 out of every 8.5 student-athletes participates)

DIVISION II

Division II provides growth opportunities through academic achievement, high-level athletics competition and community engagement. Many participants are first-generation college students.

PARTICIPATION

- 118,800 student-athletes
- 307 colleges and universities

ATHLETICS SCHOLARSHIPS

61 percent of all student-athletes receive some level of athletics aid

ACADEMICS

2014 Academic Success Rate: 71 percent*

OTHER STATS

Median Undergraduate Enrollment: 2,530
Average Number of Teams per School: 15
Average Percentage of Student Body Participating in Sports: 10 percent
Division II National Championships: 25 (1 out of every 7 student-athletes participates)

DIVISION III

The Division III experience provides an integrated environment that focuses on academic success while offering competitive athletics and meaningful non-athletics opportunities.

PARTICIPATION

- 187,800 student-athletes
- 439 colleges and universities

FINANCIAL AID

82 percent of all student-athletes receive some form of academic grant or need-based scholarship; institutional gift aid totals \$17,000 on average

ACADEMICS

2014 Academic Success Rate: 87 percent*

OTHER STATS

Median Undergraduate Enrollment: 1,860
Average Number of Teams per School: 18
Average Percentage of Student Body Participating in Sports: 21 percent
Division III National Championships: 28 (1 out of every 10 student-athletes participates)

Want to play NCAA sports? Visit www.NCAA.org/playcollegesports

*Graduation rate for student-athletes, including those who transfer from one school to another.

NCAA Facts about NCAA sports

Does the NCAA award athletics scholarships?

Individual schools award athletics scholarships. Divisions I and II schools provide \$2.7 billion in athletics scholarships annually to more than 150,000 student-athletes. Division III schools, with more than 180,000 student-athletes, do not offer athletically related financial aid, but most student-athletes receive some form of academic grant or need-based scholarship.

Do many high school athletes earn athletics scholarships?

Very few, in fact. About 2 percent of high school athletes are awarded some form of athletics scholarship to compete in college.

Do NCAA student-athletes have difficulty meeting graduation requirements with the time demands of their sport?

While competing in college does require strong time-management skills and some thoughtful planning with academic advisors, on average NCAA student-athletes graduate at a higher rate than the general student body.

Do many NCAA student-athletes go on to play professionally?

Fewer than 2 percent of NCAA student-athletes go on to be professional athletes. In reality, most student-athletes depend on academics to prepare them for life after college. Education is important. There are nearly half a million NCAA student-athletes, and most of them will go pro in something other than sports.

ESTIMATED PROBABILITY OF COMPETING IN NCAA ATHLETICS BEYOND HIGH SCHOOL

Student-Athletes	All Sports	Men's Basketball	Women's Basketball	Football	Baseball	Men's Ice Hockey	Men's Soccer
High School Student-Athletes	7,800,000	1,541,500	429,500	1,083,600	486,600	35,900	432,600
NCAA Student-Athletes	489,000	18,700	16,600	72,800	34,200	4,100	24,500
Percentage Moving from High School to NCAA	6%	3.5%	3.9%	6.7%	7%	11.3%	5.7%
Percentage Moving from NCAA to Major Professional	2%	1.1%	0.9%	1.6%	9.7%	6.6%	1.4%

Percent NCAA to Major Professional figures are based on the number of draft picks made in the NFL, NBA, WNBA, MLB, NHL and MLS drafts.

DIVISION I ACADEMIC REQUIREMENTS

College-bound student-athletes will need to meet the following academic requirements to practice, receive athletic scholarships, and/or compete during their first year.

Core-Course Requirement

Complete 16 core courses in the following areas:

<div style="background-color: #333; color: white; padding: 10px; border-radius: 10px 10px 0 0;"> ENGLISH </div> <div style="background-color: #ccc; padding: 5px; border-radius: 0 10px 10px 10px;"> 4 years </div>	<div style="background-color: #333; color: white; padding: 10px; border-radius: 10px 10px 0 0;"> MATH <small>(Algebra I or higher)</small> </div> <div style="background-color: #ccc; padding: 5px; border-radius: 0 10px 10px 10px;"> 3 years </div>	<div style="background-color: #333; color: white; padding: 10px; border-radius: 10px 10px 0 0;"> NATURAL/ PHYSICAL SCIENCE <small>(One year of lab, if offered)</small> </div> <div style="background-color: #ccc; padding: 5px; border-radius: 0 10px 10px 10px;"> 2 years </div>	<div style="background-color: #333; color: white; padding: 10px; border-radius: 10px 10px 0 0;"> ADDITIONAL ENGLISH, MATH OR NATURAL/ PHYSICAL SCIENCE </div> <div style="background-color: #ccc; padding: 5px; border-radius: 0 10px 10px 10px;"> 1 year </div>	<div style="background-color: #333; color: white; padding: 10px; border-radius: 10px 10px 0 0;"> SOCIAL SCIENCE </div> <div style="background-color: #ccc; padding: 5px; border-radius: 0 10px 10px 10px;"> 2 years </div>	<div style="background-color: #333; color: white; padding: 10px; border-radius: 10px 10px 0 0;"> ADDITIONAL COURSES <small>(Any area listed to the left, foreign language or comparative religion/philosophy)</small> </div> <div style="background-color: #ccc; padding: 5px; border-radius: 0 10px 10px 10px;"> 4 years </div>
---	--	---	--	--	---

Full Qualifier

- Complete 16 core courses.
 - Ten of the 16 core courses must be completed before the seventh semester (senior year) of high school.
 - Seven of the 10 core courses must be in English, math or science.
- Earn a core-course GPA of at least 2.300.
- Earn the ACT/SAT score matching your core-course GPA on the Division I sliding scale (see back page).
- Graduate high school.

Academic Redshirt

- Complete 16 core courses.
- Earn a core-course GPA of at least 2.000.
- Earn the ACT/SAT score matching your core-course GPA on the Division I sliding scale (see back page).
- Graduate high school.

Full Qualifier:

College-bound student-athletes may practice, compete and receive athletics scholarships during their first year of enrollment at an NCAA Division I school.

Academic Redshirt:

College-bound student-athletes may receive athletics scholarships during their first year of enrollment and may practice during their first regular academic term, but may NOT compete during their first year of enrollment.

Nonqualifier:

College-bound student-athletes cannot practice, receive athletics scholarships or compete during their first year of enrollment at an NCAA Division I school.

Test Scores

When a student registers for the SAT or ACT, he or she can use the NCAA Eligibility Center code of **9999** so his or her scores are sent directly to the NCAA Eligibility Center from the testing agency. Test scores on transcripts will **NOT** be used in his or her academic certification.

A combined SAT score is calculated by adding reading and math subscores. An ACT sum score is calculated by adding English, math, reading and science subscores. A student may take the SAT or ACT an unlimited number of times before he or she enrolls full time in college. If a student takes either test more than once, the best subscore from different tests are used to meet initial-eligibility requirements.

If a student took the SAT before March 2016 and then took the redesigned SAT at a later date, the NCAA Eligibility Center will not combine section scores from the former and redesigned SAT when determining his or her initial eligibility. The NCAA Eligibility Center will only combine section scores from the same version of the test. Because the redesigned SAT varies in design and measures different academic concepts than the former SAT, the Eligibility Center will apply the College Board's concordance tables when performing academic certifications for students with redesigned SAT scores.

*To compare SAT scores, click [here](#) for a comparison table, or click [here](#) to visit the College Board's website.

DIVISION I FULL QUALIFIER SLIDING SCALE			DIVISION I FULL QUALIFIER SLIDING SCALE		
CORE GPA	SAT*	ACT SUM	CORE GPA	SAT*	ACT SUM
	READING/MATH			READING/MATH	
3.550	400	37	2.750	720	59
3.525	410	38	2.725	730	60
3.500	420	39	2.700	740	61
3.475	430	40	2.675	750	61
3.450	440	41	2.650	760	62
3.425	450	41	2.625	770	63
3.400	460	42	2.600	780	64
3.375	470	42	2.575	790	65
3.350	480	43	2.550	800	66
3.325	490	44	2.525	810	67
3.300	500	44	2.500	820	68
3.275	510	45	2.475	830	69
3.250	520	46	2.450	840	70
3.225	530	46	2.425	850	70
3.200	540	47	2.400	860	71
3.175	550	47	2.375	870	72
3.150	560	48	2.350	880	73
3.125	570	49	2.325	890	74
3.100	580	49	2.300	900	75
3.075	590	50	2.299	910	76
3.050	600	50	2.275	910	76
3.025	610	51	2.250	920	77
3.000	620	52	2.225	930	78
2.975	630	52	2.200	940	79
2.950	640	53	2.175	950	80
2.925	650	53	2.150	960	81
2.900	660	54	2.125	970	82
2.875	670	55	2.100	980	83
2.850	680	55	2.075	990	84
2.825	690	56	2.050	1000	85
2.800	700	57	2.025	1010	86
2.775	710	58	2.000	1020	86

ACADEMIC REDSHIRT

2017 DIVISION II ACADEMIC REQUIREMENTS

College-bound student-athletes first enrolling at an NCAA Division II school need to meet the following academic rules to practice, compete and receive an athletics scholarship during their first year.

Core-Course Requirement

Complete 16 core courses in the following areas:

<p>ENGLISH</p>	<p>MATH (Algebra I or higher)</p>	<p>NATURAL/ PHYSICAL SCIENCE (including one year of lab science, if offered)</p>	<p>SOCIAL SCIENCE</p>	<p>ADDITIONAL (English, math, or natural/physical science)</p>	<p>ADDITIONAL (English, math, natural/physical science, social science, foreign language, comparative religion or philosophy)</p>
<p>3 years</p>	<p>2 years</p>	<p>2 years</p>	<p>2 years</p>	<p>3 years</p>	<p>4 years</p>

Full Qualifier

- Complete 16 core courses.
- Earn a core-course GPA of at least 2.000.
- Earn an SAT combined score of at least 820 or an ACT sum score of at least 68
- Graduate high school.

Partial Qualifier

- Complete 16 core courses.
- Earn a core-course GPA of at least 2.000.
OR
Earn an SAT combined score of at least 820 or an ACT sum score of at least 68
- Graduate high school.

Test Scores

If a student took the SAT before March 2016 and then took the redesigned SAT at a later date, the NCAA Eligibility Center will not combine section scores from the former and redesigned SAT when determining his or her initial eligibility. The NCAA Eligibility Center will only combine section scores from the same version of the test. Because the redesigned SAT varies in design and measures different academic concepts than the former SAT, the Eligibility Center will apply the College Board's concordance tables when performing academic certifications for students with redesigned SAT scores.

Full Qualifier:

College-bound student-athletes may practice, compete and receive athletics scholarships during their first year of enrollment at an NCAA Division II school.

Partial Qualifier:

College-bound student-athletes may receive athletics scholarships during their first year of enrollment and may practice during their first regular academic term, but may NOT compete during their first year of enrollment.

Nonqualifier:

College-bound student-athletes may not practice, compete or receive athletics scholarships during their first year of enrollment at an NCAA Division II school.

2018 DIVISION II NEW ACADEMIC REQUIREMENTS

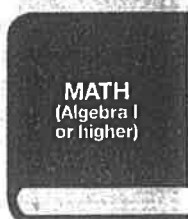
College-bound student-athletes first enrolling at an NCAA Division II school on or after August 1, 2018, need to meet new academic rules to practice, compete and receive athletics scholarships during their first year.

Core-Course Requirement

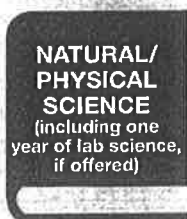
Complete 16 core courses in the following areas:



3 years



2 years



2 years



2 years



3 years



4 years

Full Qualifier

- Complete 16 core courses.
- Earn a core-course GPA of at least 2.200.
- Earn the ACT/SAT score matching your core-course GPA on the Division II full qualifier sliding scale (see back page).
- Graduate high school.

Partial Qualifier

- Complete 16 core courses.
- Earn a core-course GPA of at least 2.000.
- Earn the ACT/SAT score matching your core-course GPA on the Division II partial qualifier sliding scale (see back page).
- Graduate high school.

Full Qualifier:

College-bound student-athletes may practice, compete and receive athletics scholarships during their first year of enrollment at an NCAA Division II school.

Partial Qualifier:

College-bound student-athletes may receive athletics scholarships during their first year of enrollment and may practice during their first regular academic term, but may NOT compete during their first year of enrollment.

Nonqualifier:

College-bound student-athletes may not practice, compete or receive athletics scholarships during their first year of enrollment at an NCAA Division II school.

Test Scores

If a student took the SAT before March 2016 and then took the redesigned SAT at a later date, the NCAA Eligibility Center will not combine section scores from the former and redesigned SAT when determining his or her initial eligibility. The NCAA Eligibility Center will only combine section scores from the same version of the test. Because the redesigned SAT varies in design and measures different academic concepts than the former SAT, the Eligibility Center will apply the College Board's concordance tables when performing academic certifications for students with redesigned SAT scores.

*To compare SAT scores, click [here](#) for a comparison table, or click [here](#) to visit the College Board's website.

DIVISION II FULL QUALIFIER SLIDING SCALE		
USE FOR DIVISION II BEGINNING AUGUST 2018		
CORE GPA	SAT*	ACT SUM
	READING/MATH	
3.300 & above	400	37
3.275	410	38
3.250	420	39
3.225	430	40
3.200	440	41
3.175	450	41
3.150	460	42
3.125	470	42
3.100	480	43
3.075	490	44
3.050	500	44
3.025	510	45
3.000	520	46
2.975	530	46
2.950	540	47
2.925	550	47
2.900	560	48
2.875	570	49
2.850	580	49
2.825	590	50
2.800	600	50
2.775	610	51
2.750	620	52
2.725	630	52
2.700	640	53
2.675	650	53
2.650	660	54
2.625	670	55
2.600	680	56
2.575	690	56
2.550	700	57
2.525	710	58
2.500	720	59
2.475	730	60
2.450	740	61
2.425	750	61
2.400	760	62
2.375	770	63
2.350	780	64
2.325	790	65
2.300	800	66
2.275	810	67
2.250	820	68
2.225	830	69
2.200	840 & above	70 & above

DIVISION II PARTIAL QUALIFIER SLIDING SCALE		
USE FOR DIVISION II BEGINNING AUGUST 2018		
CORE GPA	SAT*	ACT SUM
	READING/MATH	
3.050 & above	400	37
3.025	410	38
3.000	420	39
2.975	430	40
2.950	440	41
2.925	450	41
2.900	460	42
2.875	470	42
2.850	480	43
2.825	490	44
2.800	500	44
2.775	510	45
2.750	520	46
2.725	530	46
2.700	540	47
2.675	550	47
2.650	560	48
2.625	570	49
2.600	580	49
2.575	590	50
2.550	600	50
2.525	610	51
2.500	620	52
2.475	630	52
2.450	640	53
2.425	650	53
2.400	660	54
2.375	670	55
2.350	680	56
2.325	690	56
2.300	700	57
2.275	710	58
2.250	720	59
2.225	730	60
2.200	740	61
2.175	750	61
2.150	760	62
2.125	770	63
2.100	780	64
2.075	790	65
2.050	800	66
2.025	810	67
2.000	820 & above	68 & above